



***PROFESSIONAL  
TRAINING  
EQUIPMENT  
WITH EXCELLENT  
SERVICE***

**PRODUCT CATALOG 2023**



## ABOUT US

### OUR PROMISES

A customer-oriented strategy.

Our fundamental capabilities go beyond the marketing of innovations and products. We commit to offering custom solutions to our customers and providing the quickest customer support supported by a strong technical team.

### A PROFESSIONAL SERVICE OF EXCELLENCE

Our qualified specialists will deliver, assemble, and test your new equipment so you can fully enjoy your training from day one. They will also provide you with all the information you need to use your equipment correctly and under the best conditions. Our skilled team is available to assist you in developing your personalized, functional training spaces that engage members and add value to your fitness offering.

## TRUSTED BY OUR PARTNERS

Swiss company founded in 2015 in Neuchâtel, Continuum offers bespoke solutions in the health and physical activity area. We are dedicated to finding the best innovation available and offer it to you, so you can grow your relationship with your customers.

## WHEN YOU INVEST IN OUR EQUIPMENT, WE INVEST IN YOU

Our core capabilities go beyond bringing the most advanced fitness machines to the market. As a recognized leader in commercial gym and health facilities, we offer the most responsive customer care service backed by a strong technical team.

## GET STARTED AND BRING YOUR VISION TO LIFE!

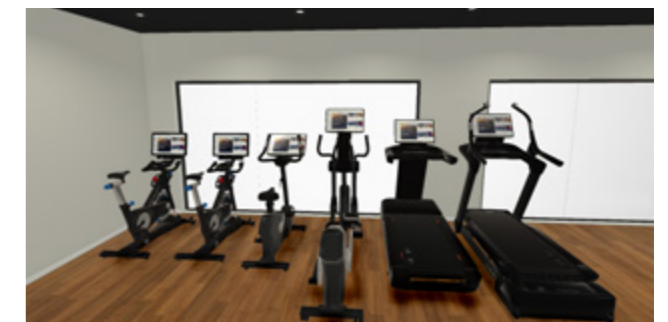
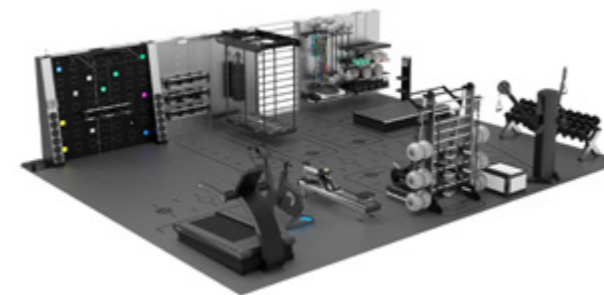
Contact us to get one step closer to bringing your vision to reality.

Our experienced team is here to help you create your personalized, functional training spaces that engage members and add value to your fitness offering.

## GLOBAL PRESENCE

- Health clubs
- Boutique studios
- Hospitality
- Rehabilitation
- Sports facilities
- Corporate wellness
- Multi-housing & co-working centers
- Emergency services

## DESIGN YOUR OWN SPACE



We help and accompany you in the design of your own space. Our wide range of fitness equipment allows you to design a space perfectly suited to your customers.

# SUMMARY



**ABOUT US..... 2**

**OUR BRANDS ..... 6**

**CARDIO.....12**

**FREEMOTION, 22 SERIES**

Incline trainer i22.9.....12  
 T22.9 Reflex™ treadmill .....12  
 E22.9 Elliptical.....12  
 coachbike b22.7.....13  
 r22.9 Recumbent bike.....13  
 u22.9 Upright bike.....13

**FREEMOTION, SMARTSERIES**

i10.9b Incline Trainer.....14  
 t10.9b Smartseries™ Reflex™ .....14  
 e10.9b Elliptical.....14  
 r10.9b Recumbent Bike.....15  
 U10.9b Upright Bike.....15

**FREEMOTION, 8 SERIES**

t8.9b Treadmill.....16  
 e8.9b Elliptical.....16  
 r8.9b Recumbent bike.....16  
 u8.9b Upright Bike.....16

**XEBEX**

AirPlus Runner with Smart Connect.....17  
 Ski Trainer 2.0 Floor Version.....17  
 Air Rower 2.0 with Smart Connect.....17  
 Airplus Expert Bike 2.0.....18  
 Air Bike.....18  
 AirPlus Cycle.....18

**STRENGHT ..... 19**

**FREEMOTION, FUSION CST & GENESIS**

Fusion CST.....19  
 Multi-Plane Chest.....19  
 Multi-Plane Shoulder.....19  
 Biceps.....19  
 Triceps.....19

**FREEMOTION, GENESIS**

Row.....20  
 Multi-Plane Calf.....20  
 Squat.....20  
 Abdominals.....20  
 Multi-Plane Lift.....20  
 Step.....21  
 Lat.....21  
 Dual Cable Cross- Inclusive Use.....21  
 Accessory Holder.....21  
 Dual Cable Cross Lite.....21  
 Cable Column.....22  
 Multi Pull / Rotation Low.....22  
 Multi Pull / Rotation High.....22  
 Total Quad / Hip.....22  
 Total Glute / Hamstring.....22

**FREEMOTION, GENESIS DS**

Chest & Shoulder.....23  
 Abdominal & Biceps.....23  
 Lats & Pulldown High Row.....23  
 Quads & Hamstrings.....24  
 Lift & Step.....24  
 Multi-Pull Press.....24

**FREEMOTION, EPIC SELECTORIZED**

Chest Press.....25  
 Leg Extension.....25  
 Lat Pulldown / High Row.....25  
 Leg Curl.....25  
 Leg Press.....25  
 Pec Fly / Rear Delt.....26

Shoulder Press.....26  
 Hip Adduction / Abduction.....26  
 Biceps Curl.....26  
 Triceps Extension.....26  
 Dip-Chin Assist.....27  
 Calf Extension.....27  
 Prone Leg Curl.....27  
 Back Extension.....27  
 Lateral Raise.....27  
 Seated Row.....28  
 Torso Rotation.....28  
 Abdominal Crunch.....28  
 Glute.....28

**FREEMOTION, EPIC FREE WEIGHT**

Weight Flat Bench.....29  
 FID Bench.....29  
 Adjustable Bench.....29  
 Utility Bench.....29  
 Preacher Curl.....29  
 45° Back Extension.....30  
 Dip Chin-Ab.....30  
 Abdominal Bench.....30  
 Olympic Flat Bench.....30  
 Olympic Incline Bench.....30  
 Olympic Decline Bench.....31  
 Military Press.....31  
 Smith Machine.....31  
 Plate-Loaded Squat.....31  
 Plate-Loaded Leg Press.....31  
 Plate-Loaded Calf.....32  
 Glute-Ham Developer.....32

**FREEMOTION, RACKS**

Annexed Pro Half Rack.....33  
 Double Pro Half Rack.....33  
 Pro Half Rack.....33  
 Pro Power Rack.....33  
 Olympic Squat Rack.....33  
 Single Tier Dumbbell Rack.....34  
 Twin Tier Dumbbell Rack.....34  
 Hex Dumbbell Rack.....34  
 Hex Dumbbell Rack Small.....34  
 Saddle Dumbbell Rack.....34  
 Barbell Rack.....34  
 Weight Plate & Bar Storage.....35  
 Multi-Storage Unit (6').....35  
 Multi-Storage Unit (10').....35  
 Multi-Storage Unit (16').....35  
 Power Sled.....35

**FREEMOTION, FITRIG™**

4' Monkey Bar Rig.....36  
 6' Monkey Bar Rig.....36  
 14' Monkey Bar Rig.....36  
 20' Monkey Bar Rig.....36  
 10' Standard Rig.....36  
 14' Standard Rig.....37  
 24' Standard Rig.....37  
 6' Premium 2.0 Rig.....37  
 12' Premium 3.0 Rig.....37  
 14' Premium 4.0 Rig.....37  
 14' Premium X-Rig 4.5.....38  
 Rip:60 Club Strap.....38  
 Dip Station.....38  
 Pair Safety Arms.....38  
 Pair Take Off J-Cups.....38  
 Plate Storage Peg - Fixed.....38  
 D-Handle.....38  
 Plyo Step.....38  
 Shackle.....38  
 Single Weight Bar Storage.....38  
 Ball Target w/ Logo.....38  
 Landmine - Basic.....38  
 Cantilever Arm.....38  
 Chin Up Bar.....38  
 Band Anchor Uprights.....38  
 Landmine - Double Knuckle.....38

Plate Storage Peg - Take Off.....39  
 Pull Up Ball - Fixed.....39  
 Pull Up Ball - Fixed.....39  
 Bar/Handle Accessory Storage Bracket.....39  
 Flying Pull Up Extension.....39  
 Dumbbell Storage Tray.....39  
 Stability Ball Storage Tray.....39  
 Kettlebell Storage Tray.....39  
 Plate Storage Tray.....39  
 Plate Storage Tray - Mobile.....39  
 Multipurpose Flat Shelf.....39  
 Stability Ball Storage Tray.....39  
 Half Ball Balance Trainer.....39  
 Multipurpose Storage Bar.....39  
 Vertical Dumbbell Storage.....39  
 Ball Storage Tray.....39  
 Dumbbell Storage Tray.....39  
 Kettlebell Storage Tray.....39  
 Plate Storage Tray.....39  
 Multipurpose Flat Shelf.....39  
 Stability Ball Storage Tray.....39  
 Half Ball Balance Trainer Tray.....39  
 Multipurpose Storage Bar.....39  
 Vertical Dumbbell Storage.....39

**KRAFTMARK, BARBELL & DISK**

Technique Bar.....40  
 Weightlifting Bar.....40  
 CF Bar 3.0.....40  
 CF Bar Basic.....40  
 Curl Bar.....40  
 Curl Bar.....40  
 Curl Bar.....41  
 Hex Bar.....41  
 Barbell Pad.....41  
 Change Plates.....41  
 Bumper Weight Plates.....41  
 Heavy Duty Bumpers.....41  
 Jaw Lock.....41

**KRAFTMARK, DUMBBELL & KETTLEBELL & RACK**

Hex Dumbbells.....42  
 Kettlebell Competition.....42  
 Wall Balls.....42  
 Bottom Plate.....42  
 Dumbbells Shelf.....42  
 Wall Balls Shelf.....42  
 Kettlebells/Balls Shelf.....43  
 Freestanding Pillar For Shelves.....43

**KRAFTMARK, ACCESSORIES**

Crash Mat.....44  
 Long Straight Lat Bar.....44  
 Multi Handle.....44  
 Straight Handle.....44  
 Triceps Handle.....44  
 Row Handle.....44  
 Strap Handle.....45  
 Triceps Rope.....45  
 Triceps Rope - Single.....45  
 Soft Plyo Box.....45  
 Battle Rope.....45  
 Elastic Band.....45

**NEUROREACTIVE TRAINING ..... 46**

**REAXING, REAX RUN**

Reax Run - Pro 1.....48  
 Tablet.....48

**REAXING, REAX 1001**

Reax 1001 - Pro 2.....49  
 Reax Lights - Pro 2.....49

**REAXING, REAX 1001 ACCESSORIES**

Multifunctional Shelf 1.....50  
 1001 Double Wallbar.....50  
 Mobile Parallels.....50  
 Multifunctional Pull Up.....50  
 Tablet Holder.....50  
 Wallbar Housing - 3 Pack.....50

**REAXING, REAX BOARD**

Reax Board - 250.....51  
 Reax Board - 125.....51

**REAXING, REAX BOARD ACCESSORIES**

Tablet.....52  
 Control Station 5.....52  
 Control Station 4.....52  
 EXTRA PRICE SOFT SURFACE VERSION.....52  
 3D Mat 100.....52  
 Soft Mat 50 - 4 Pack.....52  
 Stability Ball Storage Tray.....53  
 Soft Mat 200.....53  
 Step.....53  
 Plyo Box.....53

**REAXING, REAX RAFT**

Reax Raft Pro.....54  
 Reax Raft Basic.....54  
 Elastic Band.....54  
 Hand Pump.....54

**REAXING, REAX LIGHTS**

Reax Lights - Pro 1.....55  
 Reax Lights - Pro 2.....55  
 Reax Lights - Pro 3.....55

**REAXING, REAX LIGHTS ACCESSORIES**

Tablet.....56  
 Premium Station.....56  
 Induction Charger With Touch For Reax Lights - Pro 1.....56  
 Iron Panel.....56  
 Induction Charger With Tablet Holder For Reax Lights - Pro 2.....56  
 Pole Kit 200 - 3 Pack.....56  
 Pole Kit 100 - 2 Pack.....57  
 Lateral Rack For Premium Station.....57  
 Satellite Housing Suction Cup - 3 Pack.....57  
 Satellite Housing Strap - 3 Pack.....57  
 Satellite Housing Collar - 3 Pack.....57  
 Junction Pole.....57  
 Floor For Station.....58  
 Wireless Wifi Router.....58  
 Kit For Upgrading Premium Station To 360pack.....58

**REAXING, REAX LIFT**

Reax Rack - Pro 1.....59  
 Reax Bench.....59  
 Reax Lift Discs.....59  
 Reax Bungee.....59  
 Reax Bar 200.....59  
 Reax Disk Holder.....60  
 Mobile Parallels.....60  
 Cushion.....60  
 Vertical Storage 1.....60  
 Vertical Storage 2.....60  
 BAR COLLARS.....60

**REAXING, REAX FLUI**

Reax Flui Green 16.....61  
 Reax Flui Blue 24.....61  
 Reax Flui Bronze 28.....61  
 Reax Flui Clear 24.....61  
 Reax Cage.....61

**REAXING, REAX PUMP & ACCESSORIES**

Reax Pump Ball.....62  
 Reax Pump Bar.....62  
 Reax Kettle.....62  
 Elastic Handle.....62  
 Hand Pump.....62

**REAXING, VERTICAL STORAGE**

Vertical storage 3.....63  
 Vertical storage 4.....63  
 Vertical storage 5.....63  
 Vertical storage 6.....63  
 Vertical storage 7.....63

**CONTACT US..... 67**



## OUR BRANDS

### FREEMOTION

Freemotion offers cutting-edge **innovative fitness equipment** as well as **essentials for gyms**. Freemotion leads in terms of innovation and durability.

# FREEMOTION.

### XEBEX

Xebex has 30+ years of experience in manufacturing **a full line of HIIT equipment**. If you are looking for durable rowers, airbikes, non-motorized treadmills, ... search no more.

# XEBEX

FITNESS

### KRAFTMARK

Kraftmark creates gym equipment with a focus on functionality and quality. We offer a wide range of **training equipment and accessories**.



# KRAFTMARK

### REAXING

Reaxing provides high-tech solutions designed to challenge you by their **unpredictability and instability**. From 3D motion treadmills to kettlebells containing fluid, They have it all.

# REAXING





# FREEMOTION®



## THE WORLD'S LARGEST FITNESS INNOVATOR

**Every fitness company calls itself innovative. But what does that mean?**

At Freemotion, being innovative means laying the groundwork that the rest follow. Pioneers of commercial cardio, group and strength training solutions. For over 20 years, freemotion has set the industry standard in fitness equipment and technology, introducing the world to cable-based strength training, the incline trainer and the first road-simulating bike.

**FREEMOTION IS AT THE CUTTING-EDGE OF INNOVATIVE EXPERIENCES THAT REDEFINE THE NEXT GENERATION OF INTERACTIVE, CONNECTED FITNESS.**

**FREEMOTION** is a subsidiary of **IFIT HEALTH & FITNESS INC.**, Whose family of industry-leading brands, including **NORDICTRACK, PROFORM, WEIDER, SWEAT AND 29029.**



# XEBEX FITNESS



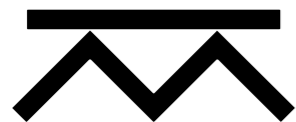
**XEBEX FITNESS HAS A HISTORY IN DESIGN AND PRODUCTION OF EQUIPMENT FOR TOP ATHLETES AND SUPER HEAVY-USE GYMS AROUND THE WORLD.**

**Xebex** designs and manufactures award-winning Rowers, Air Bikes, Non-Motorized Curved Treadmill Runners, as well as Ski Trainers, Climbers, AirPlus Bikes, and more.

**RATED THE #1 BEST CROSS TRAINING BRAND**

High-quality, Award-Winning fitness equipment with over 30 years design and manufacturing experience. Xebex design team is made up of engineers, athletes, and trainers who know the functional fitness market very well.

**DESIGNED IN USA,  
PROUDLY MADE IN TAIWAN**



# KRAFTMARK



## QUALITY THROUGH HERITAGE

Kraftmark training equipment has a strong focus on functionality and quality. Through their heritage and knowledge, they build and develop products which should give the coach and practitioner the best to achieve their goals.

## WIDE VARIETY OF PRODUCTS

With one foot in the traditional and the other in the present, Kraftmark creates gym equipment with a focus on functionality and quality. You will find a wide range of training equipment and accessories for your training.

## BORN FROM NORDIC TOUGHNESS

Kraftmark has chosen to manufacture as much as possible in Sweden. They are thus able to maintain first-class quality and design that stand out in the market.



**BORN FROM NORDIC TOUGHNESS** Set your own mark. With Kraftmark you can experience a new level of quality.

# REAXING



## NEUROREACTIVE TRAINING

Traditional trainings performed in gyms are missing an important component: **the unpredictability**. Reaxing provides innovative solutions to shift the focus to the nervous system. Their equipment is designed to be **unstable and unpredictable** to challenge your senses and your nervous system (3D motion treadmills, weights containing fluid, ...).

## INNOVATIVE SOLUTIONS

Reaxing offers a wide range of different solutions. They manufacture unpredictable treadmills, unstable training boards, intelligent light systems, all-in-one training stations, innovative weightlifting equipment, and more.

## HIGH-PERFORMANCE AND SPORTS REHAB

**PERFORMANCE SECTOR ADVANTAGES:** Several world class coaches and league champions use Reaxing, as they have seen a clear improvement in their clients performances and reflexes.

**MEDICAL SECTOR ADVANTAGES:** In the medical field, Reaxing can be considered as a new frontier for functional recovery: it opens up to various possibilities that might lead to better results.



## FREEMOTION / 22 SERIES

### 22 SERIES

#### FREEMOTION INCLINE TRAINER I22.9

Art.nr – FMTK74819

- Immersive 56cm HD iFIT-enabled touchscreen
- -3% decline, +30% incline
- Near-endless selection of trainer-led workouts
- Terrain-matching iFIT technology
- Fans that respond to the running pace
- In-handle controls for speed and incline
- USB Charging Port
- Transport wheels

Deck: 2.5 cm Double-Sided, Cushioned  
Drive Motor: AC 5.0 HP  
Belt: 54.6 x 152 cm Double Layer



**Dimension** : L203.2cm x W88.3cm x H193cm  
**Weight** : 335kg

#### FREEMOTION T22.9 REFLEX™ TREADMILL

Art.nr – FMTL70920

- 1-STEP™ Controls for HIIT workouts
- 0% to +15% incline
- Proprietary Reflex cushioning reduces impact
- Automatically adjusts incline and speed
- iFIT connected with 17'000+ workouts
- Transport wheels

Deck: 2-Sided REFLEX™  
Drive Motor: 5.0 HP AC  
Belt: 54 x 152 cm Quiet Belt  
Rollers: 8.89 cm Spin Balanced Rollers



**Dimension** : L222.8cm x W86.3cm x H167.6cm  
**Weight** : 262kg

#### FREEMOTION E22.9 ELLIPTICAL

Art.nr – FMEL84420

- Immersive 56cm HD iFIT-enabled touchscreen
- Endless selection of trainer-led workouts
- Resistance-matching iFIT technology
- Convenient in-handle controls
- Transport wheels

Resistance System: 400 Watt self-generator  
Drive System: Quiet Belt Hutchinson J10 rear drive  
Grips: Dual Pulse Sensors  
Gear Ratio: 8.85:1  
Stride Length: 50.8 cm



**Dimension** : L215.9cm x W58.4cm x H160cm  
**Weight** : 135kg

## FREEMOTION / 22 SERIES

### 22 SERIES

#### FREEMOTION COACHBIKE B22.7

Art.nr – FMEX81820

- Immersive 56cm HD iFIT-enabled touchscreen
- Double-sided pedals for both high-performance SPD cleats and traditional fitness footwear
- Terrain-matching incline control from -10% to 20% grade
- 700+ seat and handlebar configurations for custom fit / feel
- Gates carbon drive belt and Silent Magnetic Resistance (SMR)
- Soft-touch TPE phone holder and USB charging port

Deck: Cushioned 2-Sided Deck  
Drive Motor: 4.0 HP  
Belt: 54 x 152 cm Quiet Belt  
Rollers: 7.62 cm machined rollers



**Dimension** : L143.5cm x W61cm x H156.2cm  
**Weight** : 76kg

#### FREEMOTION R22.9 RECUMBENT BIKE

Art.nr – FMEX82520

- Immersive 56cm HD iFIT-enabled touchscreen
- Oversized, cushioned seat for comfort and lower back support
- Near-endless selection of trainer-led workouts
- Resistance-matching iFIT technology
- Convenient in-handle controls to increase/decrease resistance



**Dimension** : L172.7cm x W60.9cm x H129.5cm  
**Weight** : 95kg

#### FREEMOTION U22.9 UPRIGHT BIKE

Art.nr – FMEX82420

- Immersive 56cm HD iFIT-enabled touchscreen
- Near-endless selection of trainer-led studio class and outdoor workouts
- Resistance-matching iFIT technology
- Convenient in-handle controls to increase/decrease resistance



**Dimension** : L137.1cm x W60.9cm x H147.3cm  
**Weight** : 68kg

## FREEMOTION / SMARTSERIES

### SMARTSERIES

#### FREEMOTION I10.9B INCLINE TRAINER

Art.nr – FMTK74218

- -3% decline, +30% incline
- 1-STEP™ Controls for HIIT training
- Terrain-matching iFIT technology
- In-handle controls for speed and incline
- USB Charging Port
- Transport wheels

Deck: 2.5 cm Double-Sided, Cushioned

Drive Motor: AC 5.0 HP

Belt: 54.6 x 152 cm Double Layer



**Dimension:** L203.2cm x W88.3cm x H193cm  
**Weight:** 331kg

#### FREEMOTION T10.9B SMARTSERIES™ REFLEX™

Art.nr – FMTL70718

- 1-STEP™ Controls for HIIT workouts
- 0% to +15% incline
- Proprietary Reflex cushioning reduces impact
- Automatically adjusts incline and speed
- iFIT connected with 17'000+ workouts
- Transport wheels

Deck: 2-Sided REFLEX™

Drive Motor: 5.0 HP AC

Belt: 54 x 152 cm Quiet Belt

Rollers: 8.89 cm Spin Balanced Rollers



**Dimension:** L222.8cm x W86.3cm x H167.6cm  
**Weight:** 262kg

#### FREEMOTION E10.9B ELLIPTICAL

Art.nr – FMEL84418

- Low impact, all adventure
- Simplified console, convenient in-handle controls
- iFIT: 17'000+ workouts and automatic adjustments
- Transport wheels

Resistance System: 400 Watt self-generator

Drive System: Quiet Belt Hutchinson J10 rear drive

Grips: Dual Pulse Sensors

Gear Ratio: 8.85:1

Stride Length: 50.8 cm



**Dimension:** L215.9cm x W58.4cm x H160cm  
**Weight:** 130kg

## FREEMOTION / SMARTSERIES

### SMARTSERIES

#### FREEMOTION R10.9B RECUMBENT BIKE

Art.nr – FMEX82518

- This upgraded biking experience comes with a simplified console
- The bike tracks workout essentials such as calories, time and distance
- iFIT connected: 17'000+ workouts and automatic incline and speed adjustments



**Dimension:** L172.7cm x W60.9cm x H129.5cm  
**Weight:** 90kg

#### FREEMOTION U10.9B UPRIGHT BIKE

Art.nr – FMEX82418

- Very intuitive console
- Easy to use as you can just jump on it and get started
- iFIT connected: 17'000+ workouts and automatic incline and speed adjustments



**Dimension:** L137.1cm x W60.9cm x H147.3cm  
**Weight:** 65kg





## FREEMOTION / 8 SERIES

### FREEMOTION T8.9B TREADMILL

Art.nr – VMTL29818

- Reaching 19 km/h (12 mph)
- Incline up to 15%
- Versatile, sprint interval treadmill
- iFIT: 17'000+ workouts and automatic adjustments
- Transport wheels

Deck: Cushioned 2-Sided Deck  
Drive Motor: 4.0 HP  
Belt: 54 x 152 cm Quiet Belt  
Rollers: 7.62 cm machined rollers



**Dimension:** L205.7cm x W91.4cm x H152.4cm  
**Weight:** 163kg

### FREEMOTION E8.9B ELLIPTICAL

Art.nr – INEL81920

- Low impact, all adventure.
- Simplified console
- iFIT: 17'000+ workouts and automatic adjustments
- Transport wheels

Resistance System: 250 Watt self-generator  
Drive System: Quiet Belt Hutchinson J10 rear drive  
Grips: Soft touch upper body grips  
Gear Ratio: 8.85:1  
Stride Length: 50.8 cm



**Dimension:** L212cm x W62.4cm x H159.2cm  
**Weight:** 127kg

### FREEMOTION R8.9B RECUMBENT BIKE

Art.nr – VMEX82018

- Simplified console
- The bike tracks workout essentials
- iFIT connected: 17'000+ workouts and automatic incline and speed adjustments



**Dimension:** L176cm x W59.1cm x H125.4cm  
**Weight:** 93kg

### FREEMOTION U8.9B UPRIGHT BIKE

Art.nr – VMEX81418

- Very intuitive console
- Easy to use as you can just jump on it and get started
- iFIT connected: 17'000+ workouts and automatic incline and speed adjustments



**Dimension:** L176cm x W59.1cm x H125.4cm  
**Weight:** 93kg

## XEBEX

## XEBEX

### XEBEX AIRPLUS RUNNER WITH SMART CONNECT

Art.nr – ACRT-01

Non-motorized, self-generated, curved treadmill with console that indicates Time, Calories burned, Distance, Speed, Watts, RPM, and Pace, with a number of heart-rate and interval programs available. Smart Connect allows user to connect the console to a variety of 3rd party apps.

- Proven to burn 30% more calories than traditional, motorized treadmills
- Compatible with Zwift, Kinomap, etc
- 8 levels of resistance
- Multi-grip handlebar (sled drive)
- 10mm thick, low-impact, shock-absorbing, vulcanized rubber running surface



**Dimension:** L209cm x W88cm x H167cm  
**Weight:** 160kg

### XEBEX SKI TRAINER 2.0 FLOOR VERSION

Art.nr – ASK-2-F

Easy-to-use console keeps track of time, distance, calories, number of strokes, average speed per 500 meters, average number of meters per stroke, maximum heart rate, calories per hour, power curve, maximum wattage, wattage diagram and average wattage.

- Easy transport with wheels
- Comfort grip handles
- Multi-program predefined available



**Dimension:** L126cm x W75cm x H208cm  
**Weight:** 39kg

### XEBEX AIR ROWER 2.0 WITH SMART CONNECT

Art.nr – AR-2

Console auto-starts and tracks time, distance, calories and number of strokes. Predefined programs: quick start, competitions, interval / tab data, target time, target distance, target calories, heart rate target frequency and target values. Smart Connect allows users to connect the console to a variety of 3rd party apps.

- Heavy and durable frame
- 8 display options: average speed per 500 meters, average number of meters per stroke, maximum heart rate, calories per hour, power curve, maximum wattage, wattage diagram and average wattage.
- Easy to store and foldable



**Dimension:** L251cm x W50.8cm x H115cm  
**Weight:** 43kg

## XEBEX

## XEBEX

### XEBEX AIRPLUS EXPERT BIKE 2.0

Art.nr – ABVR-2L

The Xebex AirPlus Expert Bike has both air and 8 different levels of magnetic resistance. Thanks to the resistance that can be set manually, this bicycle is extremely suitable for a broad target group, from the starting athlete to the Crossfit athlete competition.

- Belt drive – Low maintenance
- Heavy-duty for the most intense workout
- Ergonomic Adjustable Seat
- Multi-Grip Handle bar
- Air + Magnetic Resistance



**Dimension:** L139cm x W66cm x H144cm  
**Weight:** 79kg

### XEBEX AIR BIKE

Art.nr – AB-1

It has all the features you want. When you start pedaling, the computer will immediately monitor the distance, time, speed, calories, watts and heart rate. The console also allows switching between meters or miles and shows very accurate results. It is also possible to cycle pre-set interval programs. An adjusted program with desired interval or work / rest period can also be set.

- Heavy-duty 24 "fan in 27" fan housing
- Sealed bearings in bottom bracket
- Weighted swing arms for more intensive workout
- Increased arm position for better range-of-motion
- Two transport wheels



**Dimension:** L122cm x W65cm x H133cm  
**Weight:** 50kg

### XEBEX AIRPLUS CYCLE

Art.nr – AMSB-03

The air-based flywheel puts the rider in control of intensity at all times. Rider can easily keep track of the resistance level the damper is set on, with our brightly-lit display. Increase your power and strength training by adjusting our AirPlus (magnetic) resistance as well. Smart Connect allows users to connect the console to a variety of 3rd party apps.

- AirPlus (Air + Magnetic Resistance)
- Smart Connect technology
- Bright-Display HIIT Console
- Self-Generating Power
- FreeWheel Design – when you stop pedaling, the flywheel/fan continues to turn with your feet/pedals stopped
- Two transport wheels



**Dimension:** L125cm x W52cm x H120cm  
**Weight:** 58kg

## FREEMOTION / FUSION CST & GENESIS

### FREEMOTION FUSION CST

Art.nr – FMSY59719

- Silent Magnetic Resistance with inertia-enhanced flywheel
- 20 power settings with intuitive watts power readout
- Six high-strength, abrasion-hardened, fluid-movement cable cords
- 2.5 meters of independent handle travel
- ANT+ heart rate receiver
- Up to 45 kg of resistance



**Dimension:** L107cm x W170cm x H191cm  
**Weight:** 192kg

### FREEMOTION MULTI-PLANE CHEST

Art.nr – G600

No adjustment required, the Genesis Chest Press is approachable, intuitive to use and has a greater range of motion than other chest presses on the market. Genesis is the safest and most comfortable choice.

- Smooth and extensive cable travel
- Independent arm movement
- Wheelchair accessible



**Dimension:** L175cm x W135cm x H185cm  
**Weight:** 220kg

### FREEMOTION MULTI-PLANE SHOULDER

Art.nr – G601

Experience a better way to build shoulder definition. Activate core muscles and get more out of it.

- Swivel pulleys
- Traditional seated position
- Wheelchair accessible



**Dimension:** L152cm x W132cm x H185.5cm  
**Weight:** 197kg

### FREEMOTION BICEPS

Art.nr – G602

Dual position seat providing for a seated or standing position to isolate the biceps or activate stabilizers. Patented Freemotion cable delivers smooth, consistent resistance for user-defined strength training.

- 2-Position seat
- Independent arm movement
- Wheelchair accessible



**Dimension:** L132cm x W91cm x H196cm  
**Weight:** 184kg

### FREEMOTION TRICEPS

Art.nr – G603

Allows for progression from seated, isolated tricep activation movements to standing tricep activation from various angles with core stabilization. Freemotion cable delivers smooth, consistent resistance for user-defined strength training.

- 2-Position seat
- Independent arm movement
- Swivel pulleys



**Dimension:** L176cm x W59.1cm x H125.4cm  
**Weight:** 210kg



## FREEMOTION / GENESIS

### FREEMOTION ROW

Art.nr – G604

Because this row begins at a higher position, it does more. Single or dual arm movements open additional workout possibilities – chop, twist, press, punch. Turn a typical strength-training workout into an aerobic, heart pounder.

- Swivel pulleys
- Adjustable thigh pads
- Independent arm movement



**Dimension:** L142cm x W92cm x H196cm  
**Weight:** 222kg

### FREEMOTION MULTI-PLANE CALF

Art.nr – G607

With independent, floating foot rests, members can strengthen one leg at a time. Ideal for people of all fitness levels, it has a hand trigger and one-step seat adjustment.

- Multi-pivoting pedals
- Narrow footprint
- Independently moving foot pedals



**Dimension:** L188cm x W92cm x H195.5cm  
**Weight:** 136kg

### FREEMOTION SQUAT

Art.nr – G610

The machine naturally puts the member in the ideal squat position. Perform the perfect squat to build strong glutes and legs. This rugged, curved platform alleviates stress and pressure on the ankle.

- Contoured platform
- Advanced linkage system
- Contoured shoulder pads



**Dimension:** L229cm x W92cm x H185cm  
**Weight:** 454kg

### FREEMOTION ABDOMINALS

Art.nr – G611

This standing ab machine builds core strength and balance while targeting six abdominal muscles. Less adjustment means more workout – hit upper, lower, and side muscles for a comprehensive, customized result.

- Independent arm movement
- Lumbar support
- Swivel pulleys



**Dimension:** L86cm x W92cm x H196cm  
**Weight:** 192kg

### FREEMOTION MULTI-PLANE LIFT

Art.nr – G612

This strength machine doubles as a speed training device. Supported by a wide platform, a 'never lose' weight stack pin and upgraded handles, this multi-use piece is safer than free weights.

- Swivel pulleys
- Independent arm movement
- Textured platform



**Dimension:** L180cm x W107cm x H196cm  
**Weight:** 443.1kg

## FREEMOTION / GENESIS

### FREEMOTION STEP

Art.nr – G614

Build balance and strength through user-defined movement. An increased heart rate kick starts a metabolic effect that lasts for hours. This multi-functioning tool does more than you think.

- Adjustable step
- Swivel pulleys
- Textured step and platform



**Dimension:** L185.4cm x W91.4cm x H195.5cm  
**Weight:** 101kg

### FREEMOTION LAT

Art.nr – G620

Sit and pull independent handles to create a customized workout that's unlimited by user potential. Stand up to fire core muscles; squat to target the back.

- Independent arm movement
- Adjustable thigh pads
- Swivel pulleys



**Dimension:** L143cm x W132cm x H221cm  
**Weight:** 294kg

### FREEMOTION DUAL CABLE CROSS- INCLUSIVE USE

Art.nr – G624-IU

Enhances strength by allowing users to perform movements that mimic activities in everyday life. Every muscle and plane of motion can be worked and challenged on this unique machine.

- User-defined movement
- Independently rotating arms
- Near unlimited exercises
- Dual weight stacks
- Wheelchair accessible



**Dimension:** L178cm x W160cm x H188cm  
**Weight:** 565kg

### FREEMOTION ACCESSORY HOLDER

Art.nr – G24AH

Compatible with G624, G624-IU and G424 Dual Cable Cross products.

Constructed with 11-gauge steel and electrostatically powder-coated, this accessory holder features seven sets of handle hooks (two hooks per set).



### FREEMOTION DUAL CABLE CROSS LITE

Art.nr – G424

Slightly smaller than the original Dual Cable Cross, this modified version is ideal for:

- Physiotherapists
- Hotels
- Recreational centers

The same amazing flexibility and total-body benefits as the traditional machine.



**Dimension:** L196cm x W156cm x H183cm  
**Weight:** 452kg

## FREEMOTION / GENESIS

### FREEMOTION CABLE COLUMN

Art.nr – G625

Tremendous cable travel and adjustable height make this piece the hardest working tool in your gym. Switch out pull handles for an ankle cuff to build all over leg strength. Perfect for circuit or HIIT training.

- Adjustable pulley system
- Locking wheels
- Wheelchair accessible



**Dimension:** L89cm x W109cm x H231cm  
**Weight:** 195kg

### FREEMOTION MULTI PULL / ROTATION LOW

Art.nr – G626

Live-sliding pulleys provide progressive resistance and muscle activation throughout the entire workout. Independent arm movements for back, shoulders, arms.

- Progressive resistance
- Swivel pulleys
- Independent arm movements
- ADA accessible



**Dimension:** L112cm x W160cm x H188cm  
**Weight:** 222kg

### FREEMOTION MULTI PULL / ROTATION HIGH

Art.nr – G627

This multi-functioning machine can do everything. With no seat, the user stands to build upper body strength along with core strength and stability.

- Progressive resistance
- Swivel pulleys
- Independent arm movements
- ADA accessible



**Dimension:** L112cm x W160cm x H188cm  
**Weight:** 222kg

### FREEMOTION TOTAL QUAD / HIP

Art.nr – G628

Train the anterior leg muscles to create stability and mobility. Live-sliding pulleys follow the path of movement with progressive resistance and optimum muscle activation.

- Progressive resistance
- Swivel pulleys
- Dual independent tracks



**Dimension:** L191cm x W117cm x H185cm  
**Weight:** 233kg

### FREEMOTION TOTAL GLUTE / HAMSTRING

Art.nr – G629

Ascending contraction makes the Genesis™ Hamstring the most effective trainer on the market. Target muscles in the legs, glutes and quads to increase strength for walking or running.

- Progressive resistance
- Swivel pulleys
- Center pulley track



**Dimension:** L205.7cm x W91.4cm x H152.4cm  
**Weight:** 163kg

## FREEMOTION / GENESIS DS

### GENESIS DS

#### FREEMOTION CHEST & SHOULDER

Art.nr – GD500

Swivel pulleys with a snap clip design. The seat quickly folds down and out of the way for standing positions.

- Multiple shoulder / chest press
- Aluminum swivel pulleys
- Independent arm movement
- Wheelchair accessible



**Dimension:** L119cm x W163cm x H163cm  
**Weight:** 276kg

#### FREEMOTION ABDOMINAL & BICEPS

Art.nr – GD501

Combined biceps training with abdominal work in one machine. Work the core, upper, lower and oblique abdominals, arms and shoulders.

- Multiple abdominal crunch/ bicep
- Aluminum swivel pulleys
- Independent arm movement
- Wheelchair accessible



**Dimension:** L129.5cm x W94cm x H183cm  
**Weight:** 276kg

#### FREEMOTION LATS & PULLDOWN HIGH ROW

Art.nr – GD502

Engages arms, shoulders, back and stabilizer muscles to improve core strength and balance. The pivoting seat can be quickly folded away for standing positions.

- Multiple pulling options
- Adjustable thigh pad
- Independent arm movement
- Wheelchair accessible



**Dimension:** L137cm x W122cm x H213cm  
**Weight:** 322kg



## FREEMOTION / GENESIS DS

### GENESIS DS

#### FREEMOTION QUADS & HAMSTRINGS

Art.nr – GD503

Unlock explosive leg power! Every movement utilizes cable training with a swivel pulley design to create exercise flexion and targeted muscle training.

- Anterior, posterior training
- Large line-x® platform
- Aluminum swivel pulleys
- Vertical handles



**Dimension:** L178cm x W81cm x H163cm  
**Weight:** 279kg

#### FREEMOTION LIFT & STEP

Art.nr – GD504

Train leg and back muscles to improve strength for everyday lifting and stepping. Combine low pulling and rotational movements with step and lunge movements to engage a total-body workout.

- Multiple low pulling/stepping
- Textured line-x® platform
- Independent arm movement
- Aluminum swivel pulleys



**Dimension:** L165cm x W94cm x H163cm  
**Weight:** 329kg

#### FREEMOTION MULTI-PULL PRESS

Art.nr – GD505

Strengthen forearms, shoulders, chest and neck. Cable-based training and interchangeable snap-clip pulleys target arms from a seated or standing position.

- Multiple mid/low pull options
- Adjustable thigh pad
- Independent arm movement
- Aluminum swivel pulleys



**Dimension:** L168cm x W78cm x H162.5cm  
**Weight:** 289kg

## FREEMOTION / EPIC SELECTORIZED

#### FREEMOTION CHEST PRESS

Art.nr – ES800

Strengthen and isolate chest muscles. This machine utilizes natural motion to create a progressive workout that's effective for beginners and experts.

- Low profile tower design
- Converging axis arms
- Unilateral arm movement
- Resistance 134 kg



**Dimension:** L157cm x W107cm x H183cm  
**Weight:** 280kg

#### FREEMOTION LEG EXTENSION

Art.nr – ES801

Isolates quad muscles in three positions. A lowered tower contributes to an open-floor concept.

- Multiple start positions
- Adjustable back pad
- Adjustable leg assembly
- Resistance 130 kg



**Dimension:** L130cm x W137cm x H147cm  
**Weight:** 260kg

#### FREEMOTION LAT PULLDOWN / HIGH ROW

Art.nr – ES802

The L-shaped handle creates multiple grip positions to target different muscle groups in the back. The low, customizable weight stack creates a polished presentation that makes your facility stand out from the competition.

- Unilateral arm movement
- Multiple handle positions
- Adjustable thigh pads
- Resistance 138 kg



**Dimension:** L52cm x W169cm x H195cm  
**Weight:** 300kg

#### FREEMOTION LEG CURL

Art.nr – ES803

A wide range of motion puts the focus on strengthening leg muscles. Spring-loaded and counterbalanced, upgraded with a lowered tower height that promotes an open feel.

- Multiple start positions
- Adjustable back pad
- Adjustable leg assembly
- Resistance 93 kg



**Dimension:** L124cm x W150cm x H147cm  
**Weight:** 254kg

#### FREEMOTION LEG PRESS

Art.nr – ES804

Wide open design and lowered tower, works for people of all fitness levels. Target the upper legs with an arc-shaped movement pattern that fully extends the body.

- Multiple start positions
- Platform adjustment
- Backrest adjustment
- Resistance 216 kg



**Dimension:** L230cm x W112cm x H185cm  
**Weight:** 520kg

## FREEMOTION / EPIC SELECTORIZED

### FREEMOTION PEC FLY / REAR DELT

Art.nr – ES806

Freestyle machine that builds strength through natural movement. Redesigned with a lowered weight stack, the dual function training strengthens back and chest muscles with easy to adjust, pivoting arms.

- Pivoting arms
- Unilateral arm movement
- Multiple handle positions
- Resistance 88 kg

### FREEMOTION SHOULDER PRESS

Art.nr – ES807

Lower tower, thoughtful design and customization options, targets shoulder and chest muscles through unilateral arm movement. Members will enjoy a natural range of motion that's intuitive and effective.

- Converging axis arms
- Unilateral arm movement
- Multiple handle positions
- Resistance 93 kg

### FREEMOTION HIP ADDUCTION / ABDUCTION

Art.nr – ES809

The non-restrictive design has pivoting pads to create two leg workouts in one machine. Nine different start positions isolate and strengthen inner and outer upper leg muscles while the lower weight tower adds to your open gym concept.

- Pivoting thigh pads
- Multiple start positions
- Textured foot pegs
- Resistance 70 kg

### FREEMOTION BICEPS CURL

Art.nr – ES810

User defined movement that targets the upper body with a natural range of motion. Easy seat adjustment allows your members to create a truly personalized workout. An extra long, «easy in» pin and lower profile design adds to your open floor plan.

- Unique handle design
- Comfortable arm pad
- Seat adjustments

### FREEMOTION TRICEPS EXTENSION

Art.nr – ES811

With an «easy in» adjustment pin, full pad and big wrist stops, it's easier to push weight. The tubular design and lowered tower height creates a professional look.

- Seat back adjustment
- Comfortable arm pad and hip support
- Heavy duty cable
- Resistance 93 kg



**Dimension:** L85cm x W136cm x H194cm  
**Weight:** 240kg



**Dimension:** L156cm x W155cm x H147cm  
**Weight:** 280kg



**Dimension:** L159cm x W72cm x H147cm  
**Weight:** 219kg



**Dimension:** L103cm x W127cm x H147cm  
**Weight:** 230kg



**Dimension:** L103cm x W129cm x H147cm  
**Weight:** 234kg

## FREEMOTION / EPIC SELECTORIZED

### FREEMOTION DIP-CHIN ASSIST

Art.nr – ES812

Dip wider, harder and deeper on the new and improved EPIC Assisted Dip-Chin. Go assisted or unassisted with a rugged, grip-coated platform that functionally trains the muscles in the back, upper arms and chest.

- Multi-position handles
- Textured step and platform
- Heavy duty cable
- Resistance 116 kg

### FREEMOTION CALF EXTENSION

Art.nr – ES813

Helps users build muscle and mobility used in everyday life. Floating, independent footrests is a rarity. The lowered tower height creates an open and inviting feel.

- Seat adjustments
- Line-x® coating
- Heavy duty cable
- Resistance 170 kg

### FREEMOTION PRONE LEG CURL

Art.nr – ES814

Enhances strength and muscle with a specialized, contoured arm that supports and isolates hamstrings, directing the most force to that one area.

- Adjustable leg assembly
- Contoured arm supports
- Heavy duty cable
- Resistance 88.5 Kg

### FREEMOTION BACK EXTENSION

Art.nr – ES815

Builds stabilizer muscle strength along the spinal column to improve posture and balance. The lowered tower height creates an open and inviting feel.

- Adjustable back pad
- Textured foot plate
- Footplate adjustment
- Resistance 120 kg

### FREEMOTION LATERAL RAISE

Art.nr – ES816

Builds strength in the shoulders with arms that move independently to create single or dual exercises.

- Unilateral arm movement
- Swiveling handles
- Seat adjustments
- Resistance 93 kg



**Dimension:** L127cm x W158cm x H253cm  
**Weight:** 340kg



**Dimension:** L175cm x W191cm x H147cm  
**Weight:** 320kg



**Dimension:** L136cm x W167cm x H147cm  
**Weight:** 221kg



**Dimension:** L199cm x W136cm x H147cm  
**Weight:** 261kg



**Dimension:** L85cm x W115cm x H147cm  
**Weight:** 200kg



## FREEMOTION / EPIC SELECTORIZED

### FREEMOTION SEATED ROW

Art.nr – ES817

With no fixed cables and a large range of motion, the EPIC Seated Row works the back, shoulders and arms. The lowered tower height creates an open and inviting feel.

- Freegrip™ handles
- Unilateral arm movements
- Adjustable chest pad
- Resistance 116 KG



**Dimension:** L101cm x W175cm x H147cm  
**Weight:** 260kg

### FREEMOTION TORSO ROTATION

Art.nr – ES818

Builds core strength, stability and overall balance. With a quick pin adjustment, plush pads and a lower weight tower, this modern gym training piece is easy to use and easy to clean.

- Rotating arm pad
- Leg pads
- Start position adjustment
- Resistance 80 kg



**Dimension:** L154cm x W119cm x H201cm  
**Weight:** 260kg

### FREEMOTION ABDOMINAL CRUNCH

Art.nr – ES819

Two pivoting points, dense padding and skid-resistant footrests make IT stand out. The 4-bar linkage system provides a full range of motion to make the workout smooth.

- Contoured shoulder pads
- Pivoting seat
- Shin pads



**Dimension:** L127cm x W114cm x H180cm  
**Weight:** 180kg

### FREEMOTION GLUTE

Art.nr – ES820

Standing while working the glute pulls in a core-building workout that builds balance and stability for everyday life.

- Adjustable chest pad
- Start position adjustment
- Linear bearings
- Resistance 138 kg



**Dimension:** L185cm x W81cm x H147cm  
**Weight:** 275kg

## FREEMOTION / EPIC FREE WEIGHT

### FREEMOTION WEIGHT FLAT BENCH

Art.nr – EF201

The EPIC Flat Bench was built for durability with heavy-duty 11-gauge steel. Electrostatically powder-coated for a sleek finish, the bench also has 7.6 cm transport wheels, an easy-grip handle and bolt-down holes.

- Vinyl seat
- Easy portability
- Industrial construction
- Bolt-down holes



**Dimension:** L140cm x W74cm x H43cm  
**Weight:** 26kg

### FREEMOTION FID BENCH

Art.nr – FMDY509063

FID means 'Flat, Incline and Decline.' This FID Bench offers the most functionality in one bench. Durable, long lasting pads along with an 11 gauge steel frame provide the perfect foundation for this multi-use piece.



**Dimension:** L164.8cm x W62.2cm x H47.2cm  
**Weight:** 70kg

### FREEMOTION ADJUSTABLE BENCH

Art.nr – EF203

The EPIC Adjustable Bench can fit everyone in your facility. The backrest tilts from -5 to 80 degrees and the seat goes to a 30 degrees incline.

- Multiple seat positions
- Vinyl seat
- Industrial construction



**Dimension:** L147cm x W71cm x H130cm  
**Weight:** 50kg

### FREEMOTION UTILITY BENCH

Art.nr – EF204

This short back, military bench makes it easier to do overhead presses. Built for comfort and safety, the EPIC Seated Bench has wear-resistant vinyl and high-density foam on the contoured backrest.

- Durable seat and backrest
- Easy portability
- Industrial construction



**Dimension:** L142cm x W74cm x H104cm  
**Weight:** 42kg

### FREEMOTION PREACHER CURL

Art.nr – EF205

The biggest difference in this machine is the slight slant to the arm padding, contoured to the body. The tripod design creates the ultimate in stability and coated hooks dampen noise levels.

- Tripod base design
- Contoured arm pad
- Industrial construction



**Dimension:** L205.7cm x W91.4cm x H152.4cm  
**Weight:** 163kg

## FREEMOTION / EPIC FREE WEIGHT

### FREEMOTION 45° BACK EXTENSION

Art.nr – EF206

Targeting the back, the split-angle foam pads create proper positioning to reduce pelvic pressure for users. Pop-pin height adjustments and secure plate placement make the workout more beneficial.

- Split-angle thigh pads
- Height adjustments
- Industrial construction

### FREEMOTION DIP CHIN-AB

Art.nr – EF207

Three workout stations in one machine. Curved handles create multiple grips for chin-up exercises while big padded elbow rests are angled to guide proper form.

- Curved handles
- Padded armrests
- Industrial construction

### FREEMOTION ABDOMINAL BENCH

Art.nr – EF213

Wider-than-normal pad and positions feet up. The flat and decline positions turn up the intensity. Made with 11-gauge steel construction, the bench is powder-coated for a professional finish.

- Backrest adjustment
- Adjustable leg pads
- Industrial construction

### FREEMOTION OLYMPIC FLAT BENCH

Art.nr – EF202

Unique Y-shaped frame gets the spotter closer to the lifter. Six plate holders positioned near the bar make loading and unloading weight easier. The extended bar racks create wider than usual hand positions.

- Multiple bar racks
- Plate load design
- Industrial construction

### FREEMOTION OLYMPIC INCLINE BENCH

Art.nr – EF214

This bench has a y-shaped frame that gets the spotter closer to the lifter. The adjustable seat has 1.5 inch of foam and durable vinyl. An inclined backrest creates the perfect foundation for overhead presses.

- Y-shaped frame
- Adjustable seat
- Industrial construction



**Dimension:** L102cm x W69cm x H135cm  
**Weight:** 55kg



**Dimension:** L119cm x W122cm x H236cm  
**Weight:** 122kg



**Dimension:** L150cm x W86cm x H104cm  
**Weight:** 68kg



**Dimension:** L163cm x W168cm x H130cm  
**Weight:** 132kg



**Dimension:** L160cm x W130cm x H110cm  
**Weight:** 110kg

## FREEMOTION / EPIC FREE WEIGHT

### FREEMOTION OLYMPIC DECLINE BENCH

Art.nr – EF215

The y-shaped frame gets the spotter closer to the lifter. The backrest is set at 15 degrees to target lower chest muscles. Leg pads adjust to 10 settings and have contoured, sliding shin pads to customize the fit.

- Y-shaped frame
- Tripod base design
- Industrial construction

### FREEMOTION MILITARY PRESS

Art.nr – EF216

The open design, catch ramp and spotter stand are just three reasons why the EPIC Military Press will add functionality to your gym. Polyurethane coated catch bars quiet noise and protect the press.

- Safety catch bars
- Open design
- Industrial construction

### FREEMOTION SMITH MACHINE

Art.nr – EF211

By eliminating the crossbar, Freemotion created an easy walk-in workout tool. With a 82.5 in (209.5 cm) bar height and 51 in (129 cm) squatting and pressing range, this piece has built-in safety stops that ratchets the barbell into place.

- Walk-through design
- Safety stops
- Industrial construction

### FREEMOTION PLATE-LOADED SQUAT

Art.nr – EF217

Unique contoured platform which enables users to maintain correct ankle alignment. It's also textured with Line-X® to ensure stable foot placement.

- Contoured platform
- Comfortable shoulder pads
- Industrial construction

### FREEMOTION PLATE-LOADED LEG PRESS

Art.nr – EF218

This heavy-duty piece of equipment has a starting resistance of 90 lbs (40.8 kg) and a maximum load weight of 900 lbs (408 kg). The four-bar linkage on the EPIC Plate Loaded Leg Press allows the lower body to move in a more natural pattern and helps reduce stress on the knees.

- Adjustable seat
- Dual-sided weight locking lever
- Industrial construction



**Dimension:** L114cm x W157cm x H226cm  
**Weight:** 111kg



**Dimension:** L132cm x W188cm x H178cm  
**Weight:** 222kg



**Dimension:** L142cm x W231cm x H239cm  
**Weight:** 212kg



**Dimension:** L190cm x W145cm x H173cm  
**Weight:** 240kg



**Dimension:** L208cm x W175cm x H147cm  
**Weight:** 230kg



## FREEMOTION / EPIC FREE WEIGHT

### FREEMOTION PLATE-LOADED CALF

Art.nr – EF222

The EPIC Plate Loaded Calf ergonomically targets calf and foot muscles to isolate this critical muscle group. Your clients will love its long list of features like the non-slip Line-X® coating stabilizes foot placement to optimize improved muscle activation.

- Convenient step-in design
- Non-slip line-x® foot placement
- Industrial construction



**Dimension:** L127cm x W114cm x H180cm  
**Weight:** 180kg

### FREEMOTION GLUTE-HAM DEVELOPER

Art.nr – FMDY709072

This machine is the lower body workout that's as tough as it is comfortable. Extra plush pads are the perfect starting block for a workout that gets results. The heavy duty anti-tip design makes this a safe, smart option for facilities. Dual functionality means that members can get the work of two machines in one - without taking up additional floor space.



**Dimension:** L161.5cm x W100.8cm x H133.6cm  
**Weight:** 117kg

## FREEMOTION / RACKS

### FREEMOTION ANNEXED PRO HALF RACK

Art.nr – FMDY500052

The Annexed Pro Half Rack combines durability and storage in one versatile system. Its side-by-side configuration has conveniently placed plate storage pegs to make it easy to load the bar.



**Dimension:** L158.7cm x W505.5cm x H239.7cm  
**Weight:** 531kg

### FREEMOTION DOUBLE PRO HALF RACK

Art.nr – FMDY500016

Looks and brains in one hardworking machine, the Freemotion Double Half Rack is where weight training and superior organization come together. Built with 7-gauge steel and in a variety of custom colors, the Freemotion Double Half Rack is sharp-looking and hardworking with ample storage and workout stations for one-on-one or small group training.



**Dimension:** L306cm x W184.9cm x H240cm  
**Weight:** 551kg

### FREEMOTION PRO HALF RACK

Art.nr – FMDY704003

The Freemotion Pro Half Rack offers outstanding workout variety in a small footprint. Users can incorporate the use of benches and other accessories for a tailored workout. Durable construction, bolt-down holes and safety catch bars are essential for powerlifting.



**Dimension:** L153.7cm x W185.4cm x H240cm  
**Weight:** 188kg

### FREEMOTION PRO POWER RACK

Art.nr – FMDY704004

Get a chin up, a leg up and a bar up on your competition with the Freemotion Pro Power Rack. An eye-catching design with extreme versatility creates the ultimate training ground for personal training sessions or small groups. Customized with 2 in (5 cm) adjustments, this rack features longer than normal pegs, quad bar storage and tougher-than-nails 7 gauge steel.



**Dimension:** L201.9cm x W184.9cm x H240cm  
**Weight:** 384kg

### FREEMOTION OLYMPIC SQUAT RACK

Art.nr – EF212

Multiple bar racks are placed at an extended width, so wide handle positions are easy to perform. The solid steel, nickel plated catch bars can safely contain a dropped bar.

- Safety catch bars
- Multiple bar racks
- Industrial construction



**Dimension:** L147cm x W175cm x H186cm  
**Weight:** 190kg



## FREEMOTION / RACKS

### FREEMOTION SINGLE TIER DUMBBELL RACK

Art.nr – EF208

Holding up to 10 standard dumbbells (up to 566.9 kg), molded holders protect the weights and prevent rolling.

**Dimension:** L71.1cm x W236.2cm x H78.7cm

**Weight:** 62kg

### FREEMOTION TWIN TIER DUMBBELL RACK

Art.nr – EF209

Holding up to 20 standard dumbbells (up to 1133 kg), molded holders protect the weights and prevent rolling.

**Dimension:** L76cm x W231cm x H79cm

**Weight:** 93kg

### FREEMOTION HEX DUMBBELL RACK

Art.nr – FMDY509083

The Freemotion Dumbbell Rack (Flat) is a smart way to organize dumbbells and other fitness tools in an efficient way. Three shelves provide ample storage for dumbbells of any size.

**Dimension:** L88.9cm x W256.6cm x H101.6cm

**Weight:** 108kg

### FREEMOTION HEX DUMBBELL RACK SMALL

Art.nr – FMDY509081

With a small footprint, the Freemotion Hex Dumbbell Rack (Short) can hold up to 1133.9 kg. Rolled shelf edge keeps hex-dumbbells securely in place.

**Dimension:** L132cm x W88.1cm x H98.5cm

**Weight:** 70kg

### FREEMOTION SADDLE DUMBBELL RACK

Art.nr – FMDY509081

Holding up to 18 pairs of dumbbells. The molded urethane holders accommodate dumbbells of nearly any shape.

**Dimension:** L256.5cm x W88.1cm x H101.6cm

**Weight:** 182kg

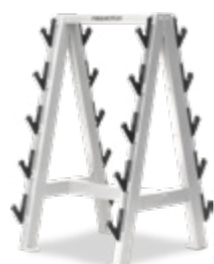
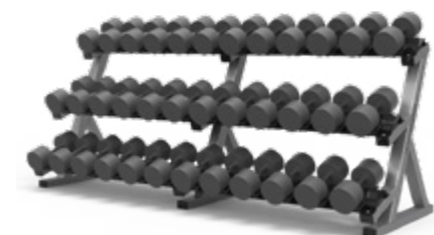
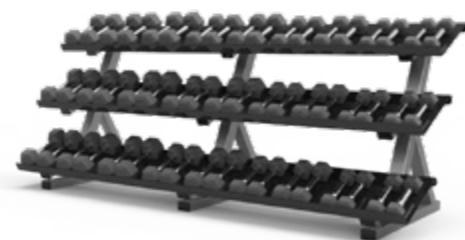
### FREEMOTION BARBELL RACK

Art.nr – EF210

The A-frame design takes up less space than other racks. Holding up to 10 standard barbells (up to 566 kg), this rack can be bolted-down for added durability.

**Dimension:** L81cm x W76cm x H132cm

**Weight:** 75kg



## FREEMOTION / RACKS

### FREEMOTION WEIGHT PLATE & BAR STORAGE

Art.nr – EF219

The EPIC Olympic Weight and Bar Rack holds two Olympic-sized straight and/or curl bars and has flared edges to secure bar placement. Able to store up to 1,270 lbs (576 kg), this hard working rack keeps everything organized.

- Holds 2 straight and/or curl bars
- Stores up to 1270 lbs
- Industrial construction

### FREEMOTION MULTI-STORAGE UNIT (6')

Art.nr – FMDY400023

An organized gym helps everything run smoother. The Freemotion 6 ft (1.8 m) Multi-Storage Unit is where it all comes together. With plenty of room for all your training equipment, this one piece does the work of multiple dumbbell racks and storage closets - but in an upgraded, single unit. When you add on rig attachment, this unit moves from smart organization to functional training without missing a beat.

### FREEMOTION MULTI-STORAGE UNIT (10')

Art.nr – FMDY400021

Look smart, store smart with this amazing storage solution. The Freemotion 10 ft (3 m) Multi-Storage Unit is your answer to personalized storage, that can be adjusted to fit your changing needs. With the capacity to hold dumbbells, med balls, wall balls, kettlebells and more, the Freemotion Multi Storage Unit holds it all, and more.

### FREEMOTION MULTI-STORAGE UNIT (16')

Art.nr – FMDY400025

The Freemotion 16 ft (4.8 m) Multi-Storage Unit definitely brings in the «wow» factor. With ample storage and incredible design, the Multi-Storage Unit has versatility that can be customized to fit your gym's needs, wants and desires. The add-on rig attachment converts this storage piece into a personal or small group training tool.

### FREEMOTION POWER SLED

Art.nr – FMDY109990

Train like a professional athlete with the Freemotion Power Sled. Pile on the weight and push to strengthen muscles, crush calories and get an amazing overall workout. The Power Sled has a smooth glide with a deeply padded push handle. With multiple vertical push poles to accommodate as much weight as you need or want, the Freemotion Power Sled has a solid 11 gauge steel frame that's ready to work as hard as your clients.



**Dimension:** L56cm x W79cm x H127cm

**Weight:** 44kg



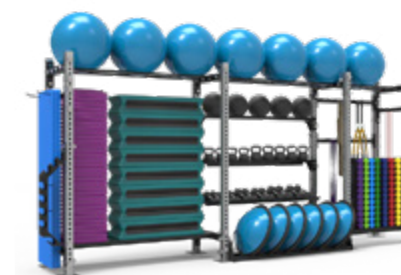
**Dimension:** L199cm x W195.5cm x H231.6cm

**Weight:** 223kg



**Dimension:** L199cm x W322.5cm x H231.6cm

**Weight:** 330kg



**Dimension:** L199cm x W497.8cm x H231.6cm

**Weight:** 453kg



**Dimension:** L104.1cm x W78.7cm x H96.5cm

**Weight:** 44kg



## FREEMOTION / FITRIG™

### FREEMOTION 4' MONKEY BAR RIG

Art.nr – FMDY4MBR

The 4 ft / 1.2 m Monkey Bar Rig creates training opportunities for groups up to five. Enjoy customized training with monkey bars, dip station, squat rack, suspension trainer and landmine. The accessory upgrade package (as pictured) is sold separately.

- Supports 4-5 people simultaneously
- 11-Gauge steel frame
- Accessory upgrade (as pictured) sold separately



**Dimension:** L213.3cm x W121.9cm x H274.3cm  
**Weight:** 122kg

### FREEMOTION 14' MONKEY BAR RIG

Art.nr – FMDY6MBR

Supporting a training group of up to eight people, this Monkey Bar Rig has multiple workout stations to create cardio, strength and stability training. This rig maximizes your square footage and creates more than new revenue, it builds a fitness community.



**Dimension:** L198.1cm x W198.1cm x H1284.5cm  
**Weight:** 143kg

### FREEMOTION 14' MONKEY BAR RIG

Art.nr – FMDY14MBR

Supporting a training group of eight to ten people, this Monkey Bar Rig has multiple workout stations to create cardio, strength and stability training. A dip station, squat rack, monkey bars, landmine, ball target, plyo step, battle rope, chin-up bar, pull-up bar, suspension trainers and add on options like Olympic bars and plates, this rig maximizes your square footage and creates more than new revenue, it builds a fitness community.



**Dimension:** L487.6cm x W243.8cm x H344.4cm  
**Weight:** 329kg

### FREEMOTION 20' MONKEY BAR RIG

Art.nr – FMDY20IMBR

Train up to 18 people at a time with the large 20 ft (6 m) Monkey Bar Rig. Our limitless fitness, strength, and cross-functional stations will keep your members coming back for a different workout every time. Designed to fit your unique needs and floor plan, Freemotion can customize the dip station, squat racks, monkey bar bridges, landmines, ball target, plyo steps, battle ropes, glute/ham developer, and suspension trainers to work best for you.



**Dimension:** L731.5cm x W304.8cm x H365.7cm  
**Weight:** 380kg

### FREEMOTION 10' STANDARD RIG

Art.nr – FMDY10W6D

Create the ultimate fitness playground with the Freemotion FitRig 10 ft / 3 m Standard Rig. Add a number of attachments and accessories like J-hooks and safety catches for lifting and pegs for plate storage. Include dip bars and plyo steps, etc. to create a comprehensive workout. Add storage trays to keep the space free of clutter.



**Dimension:** L198.1cm x W315cm x H284.5cm  
**Weight:** 173kg

## FREEMOTION / FITRIG™

### FREEMOTION 14' STANDARD RIG

Art.nr – FMDY14W6D

With heavy duty construction and huge versatility, the Freemotion FitRig 14 ft / 4.2 m Standard Rig can be its own weight room. Duplicate stations like landmines and lifting racks for versatile programming options. Integrate storage racks to keep accessories close at hand.



**Dimension:** L198.1cm x W431.8cm x H284.5cm  
**Weight:** 231kg

### FREEMOTION 24' STANDARD RIG

Art.nr – FMDY24W6D

Whether outfitting a collegiate workout facility, sports team or performance gym, the Freemotion FitRig 24 ft / 7.3 m Standard Rig can handle the weight. It optimizes space to include options for accessory storage and stations for up to 16 users.



**Dimension:** L205.7cm x W91.4cm x H152.4cm  
**Weight:** 350kg

### FREEMOTION 6' PREMIUM 2.0 RIG

Art.nr – FMDYM3Z3

Up to eight people at a time can participate in individual or small group training with the dip station, landmine, ball target and plyo step. Add the Olympic bar, plates, battle rope, suspension trainer and heavy bag – creating new workout opportunities every time members come in. The simple, clean storage trays are helpful in keeping your gym clutter-free and looking its best.



**Dimension:** L335.2cm x W182.8cm x H344.4cm  
**Weight:** 179kg

### FREEMOTION 12' PREMIUM 3.0 RIG

Art.nr – FMDYMRZ4

Support 10-12 people simultaneously with the dip station, squat rack, monkey bars, landmine, ball target, plyo step, pull-up bar, flying pull-up extension, optional Olympic bars and plates, battle rope, suspension trainer and so much more. And our creative and safe storage feature keeps your facility uncluttered.



**Dimension:** L487.6cm x W365.7cm x H344.4cm  
**Weight:** 394kg

### FREEMOTION 14' PREMIUM 4.0 RIG

Art.nr – FMDY14R2E

Up to 12 people can workout at one time with the FitRig's customizable dip station, squat rack, monkey bars, landmine, ball target, plyo step, optional Olympic bars and plates, battle rope, suspension trainers, and more. Not only does the 14 ft (4.2 m) Premium Rig create a training playground, it's a storage solution for all your balls, ropes, weights and more.



**Dimension:** L548.6cm x W304.8cm x H274.3cm  
**Weight:** 440kg

## FREEMOTION / FITRIG™

### FREEMOTION 14' PREMIUM X-RIG 4.5

Art.nr – FMDY14XRG

The generous size of the 14 ft (4.2 m) Premium Rig 4.5 creates endless workout possibilities and opens new opportunities for small group training revenue. Groups of up to 14 people can work on the dip station, squat rack, monkey bars, landmine, plyo step, optional Olympic bars and plates, suspension trainers, battle rope, and more. Tuck your training equipment into convenient storage solutions throughout the length of the FitRig.



**Dimension:** L457.2cm x W548.6cm x H344.4cm  
**Weight:** 493kg

### FREEMOTION RIP:60 CLUB STRAP

Art.nr – FMRIPI9

Rip:60 is a complete and compact training system for strength and cardio. Easily adjustable and conveniently compact, trainers can create full body and targeted workouts. Ideal for any Freemotion FitRig.



### DIP STATION

Art.nr – FMFR85020



### PAIR SAFETY ARMS

Art.nr – FMFR85120



### PAIR TAKE OFF J-CUPS

Art.nr – FMFR85220



### PLATE STORAGE PEG - FIXED

Art.nr – FMFR85320



### D-HANDLE

Art.nr – FMFR85520



### PLYO STEP

Art.nr – FMFR85920



### SHACKLE

w/ Threaded Connecting Link

Art.nr – FMFR86020



### SINGLE WEIGHT BAR STORAGE

Art.nr – FMFR86120



### BALL TARGET W/ LOGO

55.8 cm

Art.nr – FMFR86220



### LANDMINE - BASIC

Art.nr – FMFR86620



### CANTILEVER ARM

w/ Shackle & Threaded Connecting Link

Art.nr – FMFR86920



### CHIN UP BAR

Art.nr – FMFR87020



### BAND ANCHOR UPRIGHTS

Art.nr – FMFR87220



### LANDMINE - DOUBLE KNUCKLE

Art.nr – FMFR87620



## FREEMOTION / FITRIG™

### PLATE STORAGE PEG - TAKE OFF

Art.nr – FMFR87820



### PULL UP BALL - FIXED

7.6 cm

Art.nr – FMFR88020



### PULL UP BALL - FIXED

10.16 cm

Art.nr – FMFR88120



### BAR/HANDLE ACCESSORY STORAGE BRACKET

Art.nr – FMFR88620



### FLYING PULL UP EXTENSION

1.2 m

Art.nr – FMFR85720



### DUMBBELL STORAGE TRAY

1.2 m

Art.nr – FMFR86320



### STABILITY BALL STORAGE TRAY

1.2 m

Art.nr – FMFR86420



### KETTLEBELL STORAGE TRAY

1.2 m

Art.nr – FMFR86520



### PLATE STORAGE TRAY

1.2 m

Art.nr – FMFR86720



### PLATE STORAGE TRAY - MOBILE

1.2 m

Art.nr – FMFR87920



### MULTIPURPOSE FLAT SHELF

1.2 m

Art.nr – FMFR88320



### STABILITY BALL STORAGE TRAY

1.2 m

Art.nr – FMFR88520



### HALF BALL BALANCE TRAINER TRAY

1.2 m

Art.nr – FMFR88920



### MULTIPURPOSE STORAGE BAR

1.2 m

Art.nr – FMFR89120



### VERTICAL DUMBBELL STORAGE

1.2 m

Art.nr – FMFR89320



### BALL STORAGE TRAY

1.8 m

Art.nr – FMFR85420



### DUMBBELL STORAGE TRAY

1.8 m

Art.nr – FMFR85620



### KETTLEBELL STORAGE TRAY

1.8 m

Art.nr – FMFR85820



### PLATE STORAGE TRAY

1.8 m

Art.nr – FMFR86820



### MULTIPURPOSE FLAT SHELF

1.8 m

Art.nr – FMFR88220



### STABILITY BALL STORAGE TRAY

1.8 m

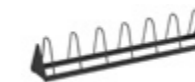
Art.nr – FMFR88420



### HALF BALL BALANCE TRAINER TRAY

1.8 m

Art.nr – FMFR88820



### MULTIPURPOSE STORAGE BAR

1.8 m

Art.nr – FMFR89020



### VERTICAL DUMBBELL STORAGE

1.8 m

Art.nr – FMFR89220





## KRAFTMARK / BARBELL & DISK

### KRAFTMARK TECHNIQUE BAR

Art.nr – 10003

Barbell type: Olympic Technology bar

- Diameter handle 25 mm
- Length: 170 cm
- Sleeve diameter: 50mm
- Tensile strength: 160.000 PSI
- Rotation system: Copper bearing



Weight: 10kg

### KRAFTMARK WEIGHTLIFTING BAR

Art.nr – 10004

Barbell type: weightlifting bar

- Diameter handle 28mm
- Length 220 cm
- Sleeve diameter 50mm
- Tensile strength: 216.000 PSI
- Rotation system: Needle bearing



Weight: 20kg

### KRAFTMARK CF BAR 3.0

Art.nr – 11158, 11159

Barbell type: Olympic bar for men

- Diameter handle 25mm
- Length 200 cm
- Sleeve diameter 50mm
- Tensile strength: 216.000 PSI
- Rotation system: Needle bearing



Weight: 15/20kg

### KRAFTMARK CF BAR BASIC

Art.nr – 11409, 11410

Barbell type: Olympic bar for men

- Diameter handle 28mm
- Length 220 cm
- Sleeve diameter 50mm
- Tensile strength: 216.000 PSI
- Rotation system: Needle bearing



Weight: 15/20kg

### KRAFTMARK CURL BAR

Art.nr – 10017

- Length: 120 cm
- Diameter: 25 mm
- Rotation system: bushing
- Tested at: 168 kg



Weight: 15/20kg

### KRAFTMARK CURL BAR

Art.nr – 10200

- Length: 122 cm
- Diameter: 25 mm
- Ruffled structure for good grip



## KRAFTMARK / BARBELL & DISK

### KRAFTMARK CURL BAR

Art.nr – 10201

- Length: 80 cm
- Diameter: 25 mm
- Ruffled structure for good grip



### KRAFTMARK HEX BAR

Art.nr – 10016

Kraftmarks Hex bar is a perfect tool for ground lifting, farmers walk and a variety of exercises where the weight is centered over the shoulders. The hex bar is 164cm long and can be loaded with the heaviest weights. Includes a pair of spring collars.



Weight : 15kg

### KRAFTMARK BARBELL PAD

Art.nr – 10026

- Length: 40 cm
- Width: 9.5 cm



### KRAFTMARK JAW LOCK

Art.nr – 10012



### KRAFTMARK CHANGE PLATES

Art.nr – 10033-10039

- Diameter: Industry standard
- Inner Diameter: 50.4 +/- 0.1 mm
- Material: Steel with rubber bearing
- Colors: Industry standard



Weight: 0.5/1/1.25/1.5/2/2.5/5kg

### KRAFTMARK BUMPER WEIGHT PLATES

Art.nr – 10028-10032

- Diameter: Industry standard 450 mm
- Inner Diameter: 50.4 +/- 0.1 mm
- Material: Rubber with stainless steel frame
- Colors: Black with standard color markings



Weight: 5/10/15/20/25kg

### KRAFTMARK HEAVY DUTY BUMPERS

Art.nr – 10044-10048

- Made of recycled vulcanized rubber
- 50.4mm Stainless Steel Frame
- Diameter: 450mm
- Warranty 2 years (5kg - 1 year)



Weight: 5/10/15/20/25kg

## KRAFTMARK / DUMBBELL & KETTLEBELL & RACK

### KRAFTMARK HEX DUMBBELLS

Art.nr – 10058 - 10080  
Hexagon dumbbells in rubber and metal handles.  
Sold individually.

- Weight options: 1-40kg
- Weight interval 1-10kg: 1kg
- Weight interval 5-40kg: 2.5kg



Weight: 1-40kg

### KRAFTMARK KETTLEBELL COMPETITION

Art.nr – 10114-10121  
Kraftmark's kettlebells are available from 8 to 40 kg.  
All kettlebells are cast in a single piece to maintain the highest quality!



Weight: 8-40kg

### WEIGHT ALTERNATIVE:

8/12/16/20/24/28/32/36/40kg

### KRAFTMARK WALL BALLS

Art.nr – 10163-10166  
Kraftmark's medicine balls are sewn to last the length of repeated throws and exercises.



Weight: 4kg/6lbs/9lbs/14lbs

### WEIGHT ALTERNATIVE:

4kg/6lbs/9lbs/14lbs

### KRAFTMARK BOTTOM PLATE

Art.nr – 10398-10402  
Color: Black, Zinc+Black, Custom  
Size: 108cm, 170cm



### KRAFTMARK DUMBBELLS SHELF

Art.nr – 10403, 10404  
Color: Black  
Size: 108cm, 170cm



### KRAFTMARK WALL BALLS SHELF

Art.nr – 10405, 10406  
Color: Black  
Size: 108cm, 170cm



## KRAFTMARK / DUMBBELL & KETTLEBELL & RACK

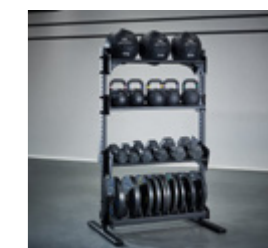
### KRAFTMARK KETTLEBELLS/BALLS SHELF

Art.nr – 10407, 10408  
Color: black  
Size: 108cm, 170cm



### KRAFTMARK FREESTANDING PILLAR FOR SHELVES

Art.nr – 10429, 10430  
Color: Black  
Size: 108cm, 170cm



Example picture





## KRAFTMARK / ACCESSORIES

### KRAFTMARK CRASH MAT

Art.nr – 11154

Sound and vibration dampening pads when you want to be able to release the bar without worry.

Size: 80 x 60 x 20cm



### KRAFTMARK LONG STRAIGHT LAT BAR

Art.nr – 10202

- Length: 122 cm
- Diameter: 25 mm



### KRAFTMARK MULTI HANDLE

Art.nr – 10203

- Length: 39 cm
- Diameter: 25 mm



### KRAFTMARK STRAIGHT HANDLE

Art.nr – 10204

- Length: 45 cm
- Diameter: 25 mm



### KRAFTMARK TRICEPS HANDLE

Art.nr – 10205

- Length: 64 cm
- Diameter: 25 mm



### KRAFTMARK ROW HANDLE

Art.nr – 10206

- Length: 18 cm
- Diameter: 25 mm



## KRAFTMARK / ACCESSORIES

### KRAFTMARK STRAP HANDLE

Art.nr – 10207

- Diameter: 25 mm



### KRAFTMARK TRICEPS ROPE

Art.nr – 10208

- Length: 90 cm



### KRAFTMARK TRICEPS ROPE – SINGLE

Art.nr – 11696

- Length: 40 cm



### KRAFTMARK SOFT PLYO BOX

Art.nr – 10463

- Height: 75 cm
- Width: 60 cm
- Length: 50 cm



### KRAFTMARK BATTLE ROPE

Art.nr – 10469, 10739

- Length: 15 m
- Diameter: 40 mm
- Color: Red, Black



### KRAFTMARK ELASTIC BAND

Art.nr – 10558-10562

- Width and colors:
- 1.27cm - Red
  - 2.06cm - Black
  - 2.85m - Lila
  - 4.45cm - Green
  - 6.35cm - Blue



# REAXING

**REAXING DESIGNS AND MANUFACTURES PROFESSIONAL EQUIPMENT FOR THE NEUROREACTIVE TRAINING APPLIED TO THE HIGH PERFORMANCE AND MEDICAL SECTORS.**



## TECHNOLOGY

### SUDDEN DYNAMIC IMPULSES



#### SUDDEN

Reaxing's approach values unpredictability in both methodology and technology. Training that is entirely predetermined and constant lacks the dynamic challenges of real-life movement.



#### DYNAMIC

In life and sport, constant movement requires reactive training to improve performance and prevent injuries. This means being prepared to respond to unplanned situations to develop better motor skills.



#### IMPULSES

The sensory system receives impulses from our environment and the nervous system manages our movement. Stimulating our nervous system with unpredictable impulses improves our dynamic competence, categorized as interferences or stimuli (visual, sound, and tactile).

Traditional trainings are based on the repetition of predictable, repetitive and constant motor gestures, often performed in conditions of total stability, which do not prepare us for the real needs of life and of the sports we practice. From the movement observation of the everyday life, we have been able to understand that traditional trainings performed in gyms are missing an important component: **the unpredictability.**

## METHODOLOGY

### NEUROREACTIVE TRAINING

The only indoor training system in the world that fully involves the sensory system and shifts the focus to the nervous system.

#### 3X EFFECT

The neuroreactive training has a triple effect: better results at **mental, physical** and **dynamic competence** levels.

#### 3X TRAINING

The neuroreactive training includes proprioceptive, cognitive and neurofunctional trainings.



**PROPRIOCEPTIVE TRAINING**



**COGNITIVE TRAINING**



**NEUROFUNCTIONAL TRAINING**



#### 3D MOTION

##### PROPRIOCEPTIVE TRAINING

The Reaxing patented technology created for generating sudden motor interferences or perturbations on a treadmill (Run) or on a training platform (Board).



#### 3D VISION

##### COGNITIVE TRAINING

It is the Reaxing patented technology created for generating sudden visual stimuli on bright wired or wi-fi satellites (Reax Lights), walls and floors (Reax Lights Pro). The stimuli are finalized at provoking responses by elaborating new voluntary gestures.



#### 3D WAVE

##### NEUROFUNCTIONAL TRAINING

It is the Reaxing technology able to generate unpredictable motor interferences during any isotonic exercise, thanks to the movement of a fluid located inside a very high resistance and anti-shock polymer.



## REAXING / REAX RUN

### REAX RUN, UNPREDICTABLE RUNNING

#### REAXING REAX RUN - PRO 1

Art.nr - RE1014

**Dimension:** L242cm x W117cm x H166cm  
**Weight:** 629kg

The only treadmill in the world that performs **sudden and unpredictable** inclinations in all directions while running.

#### Benefits

- Increase of reaction rate and coordination
- Improvement of performance and motor skills
- Greater muscle engagement and definition
- Higher calories burn and metabolic activation
- Better injury recovery and functional re-education



#### Specs / features

- +/- 11% frontal and +/- 14% lateral inclination range
- Max speed: 25km/h
- 49cm integrated touch screen (19 inches)
- 21 programs from sport rehab to performance
- Heart rate monitoring
- 3d motion patented technology
- Silent, even at high speed or interference



#### REAXING TABLET

Art.nr - RE1000

A special live program allows the trainer to take control of the treadmill, modifying in real time the speed and the intensity of the interference.

Compatible with Reax run, Reax 1001, Reax board and Reax lights.

- Dedicated app included
- Pre-setted programs
- Live control mode
- Easy and intuitive use



## REAXING / REAX 1001

### REAX 1001, LIMITLESS STATION

#### REAXING REAX 1001 - PRO 2

Art.nr - RE1007

**Dimension:** L287cm x W136cm x H256cm  
**Weight:** 690kg

Face the **unpredictable**, an exclusive experience in the only cognitive, proprioceptive and neurofunctional training station in the world.

#### Benefits

- Increase of reaction rate and coordination
- Improvement of performance and motor skills
- Greater muscle engagement and definition
- Higher calories burn and metabolic activation
- Better injury recovery and functional re-education
- Unlimited training combinations

Reax tablet (RE1000) is also compatible with the Reax 1001.

#### Specs / features

- +/- 11% frontal and +/- 14% lateral inclination range
- 38cm integrated hd touch screen (15 inches)
- 21 programs on the treadmill and 18 programs on the board
- Silent, even at high speed or interference
- Customizable rack with multiple configurations for storage



#### REAXING REAX LIGHTS - PRO 2

Art.nr - RE5025

Reax lights pro adds another layer to the wide range of trainings available on the Reax 1001. Add sudden dynamic visual stimulation to your workouts and discover new cognitive experiences.

Compatible with Reax 1001.

- 6 Satellites
- 6 Light colors
- Induction charging
- Wifi connectivity



## REAXING / REAX 1001 ACCESSORIES

### REAXING MULTIFUNCTIONAL SHELF 1

Art.nr – RE1008



### REAXING 1001 DOUBLE WALLBAR

Art.nr – RE1004



### REAXING MOBILE PARALLELS

Art.nr – RE1005



### REAXING MULTIFUNCTIONAL PULL UP

Art.nr – RE1006



### REAXING TABLET HOLDER

Art.nr – RE1010



### REAXING WALLBAR HOUSING – 3 PACK

Art.nr – RE1013



## REAXING / REAX BOARD

### REAX BOARD, THE SMART FLOOR

#### REAXING REAX BOARD – 250

Art.nr – RE1015

**Dimension :** L250cm x W125cm x H33cm  
**Weight :** 440kg

Perform any exercise on this smart floor and get a **triple effect** from your workout. It combines sensory, nervous and muscle activity all at once.

#### Benefits

- Increase of reaction rate and coordination
- Improvement of performance and motor skills
- Greater muscle engagement and definition
- Higher calories burn and metabolic activation
- Better injury recovery and functional re-education

Reax tablet (RE1000) is also compatible with the Reax board.

#### Specs / features

- +/- 11% frontal and +/- 14% lateral inclination range
- 14 difficulty and interferences levels
- 3d motion patented technology
- High quality and non-slip surface
- Emergency lock down



#### REAXING REAX BOARD – 125

Art.nr – RE1016

**Dimension :** L125cm x W125cm x H33cm  
**Weight :** 305kg

Experience the innovation of 3d motion while having a smaller footprint. The Reax board 125 is the perfect compromise between space and functionalities.





## REAXING / REAX BOARD ACCESSORIES

### REAXING TABLET

Art.nr – RE1000

A special live program allows the trainer to take control of Reaxing devices, modifying in real time the speed and the intensity of the interference.

Compatible with Reax run, Reax 1001, Reax board and Reax lights.



### REAXING CONTROL STATION 5

Art.nr – RE1017

**Dimension** : L43cm x W50cm x H199cm

**Weight** : 42kg



### REAXING CONTROL STATION 4

Art.nr – RE1018

**Dimension** : L43cm x W50cm x H139cm

**Weight** : 27kg



### REAXING EXTRA PRICE SOFT SURFACE VERSION

Art.nr – RE1019

Optional Soft Floor for your Reax board.

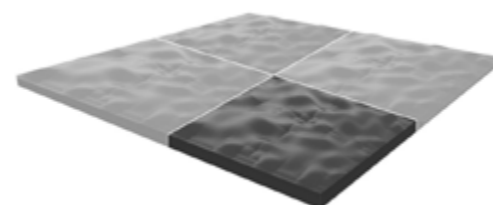


### REAXING 3D MAT 100

Art.nr – RE1043

Mat featuring uneven terrain.  
Modular product.

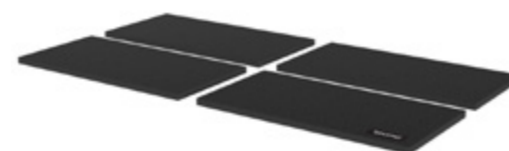
**Dimension** : L100cm x W100cm x H6cm



### REAXING SOFT MAT 50 - 4 PACK

Art.nr – RE1044

**Dimension (for each part)** : L100cm x W50cm x H3cm

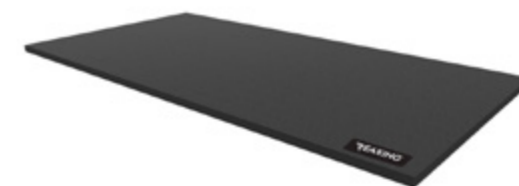


## REAXING / REAX BOARD ACCESSORIES

### REAXING SOFT MAT 200

Art.nr – RE1045

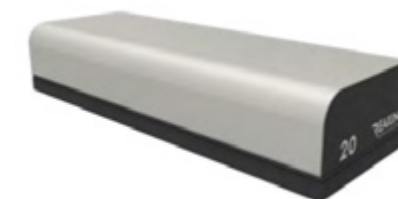
**Dimension** : L200cm x W100cm x H3cm



### REAXING STEP

Art.nr – RE1047

**Dimension** : L90cm x W35cm x H18cm



### REAXING PLYO BOX

Art.nr – RE1048

**Dimension** : L75cm x W50cm x H60cm



## REAXING / REAX RAFT

### REAX RAFT, WATER INSTABILITY

#### REAXING REAX RAFT PRO

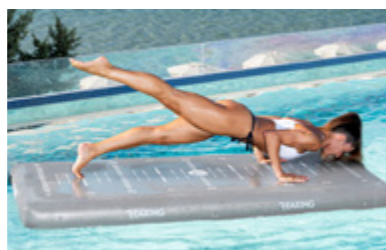
Art.nr – RE1202, RE1203

**Dimension:** L200cm x W90cm x H15cm  
**Weight:** 10kg  
**Color:** Black, Grey  
**Attachments:** 4 quick anchors

Reax raft is a **floating board** that brings the sudden dynamic impulse mechanism to pool trainings. The continuous interferences generated by the water amplify the intensity of any exercise. The neuromuscular commitment becomes much higher and this increases the metabolic activity. You can get better results in equal time and exercise routine.

#### Benefits

- Increase of reaction rate and coordination
- Higher calories burn and metabolic activation
- High grip for a safe use
- Fast anchoring and easy handling
- Marks and guides for positioning
- Soft and comfortable surface



#### REAXING REAX RAFT BASIC

Art.nr – RE1200, RE1201

**Dimension:** L200cm x W90cm x H15cm  
**Weight:** 10kg  
**Color:** Black, Grey  
**Attachments:** 2 central anchors

Same raft as the REAX RAFT PRO but with **2 central anchors**, compared to the **4 quick anchors** on the pro version.



#### REAXING ELASTIC BAND

Art.nr – RE1204, RE1205

**Resistance:**

- Light (light grey)
- Medium (dark grey)



#### REAXING HAND PUMP

Art.nr – RE1206



## REAXING / REAX LIGHTS

### REAXING REAX LIGHTS - PRO 1

Art.nr – RE1020

Reax Lights Pro is an integrated concept designed to develop interactive training programs, combinations of tasks and reflexes improvement. The Reax Lights system is the only one that includes mobile satellites, walls and floors, as well as a complete range of accessories for an innovative cognitive training.

- 12 Satellites
- 6 Light colors
- Wifi connectivity
- Induction charging

**Dimension:** L16.5cm x W16.5cm x H3.5cm  
**Weight:** 0.6kg



### REAXING REAX LIGHTS - PRO 2

Art.nr – RE1169

- 6 Satellites
- 6 Light colors
- Wifi connectivity
- Induction charging

**Dimension:** L16.5cm x W16.5cm x H3.5cm  
**Weight:** 0.6kg

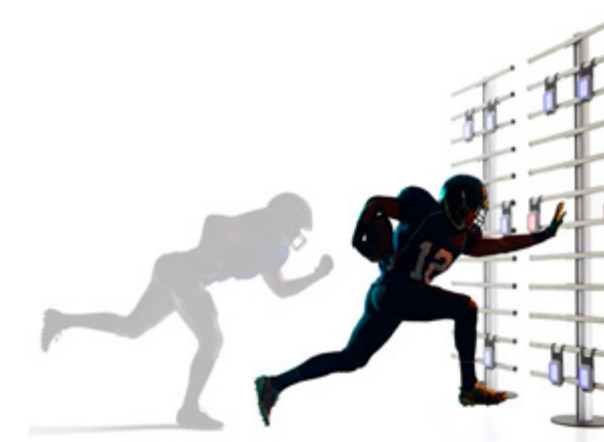


### REAXING REAX LIGHTS - PRO 3

Art.nr – RE1147

- 4 Satellites
- 6 Light colors
- Bluetooth connectivity
- Cable charging

**Dimension:** L16.5cm x W16.5cm x H3.5cm  
**Weight:** 0.6kg





## REAXING / REAX LIGHTS ACCESSORIES

### REAXING TABLET

Art.nr – RE1000

A special live program allows the trainer to take control of Reaxing devices, modifying in real time the speed and the intensity of the interference.

Compatible with Reax run, Reax 1001, Reax board and Reax lights.



### REAXING PREMIUM STATION

Art.nr – RE1021



### REAXING INDUCTION CHARGER WITH TOUCH FOR REAX LIGHTS – PRO 1

Art.nr – RE1026



### REAXING IRON PANEL

Art.nr – RE1027



### REAXING INDUCTION CHARGER WITH TABLET HOLDER FOR REAX LIGHTS – PRO 2

Art.nr – RE1030



### REAXING POLE KIT 200 – 3 PACK

Art.nr – RE1024

Height: 2m



## REAXING / REAX LIGHTS ACCESSORIES

### REAXING POLE KIT 100 – 2 PACK

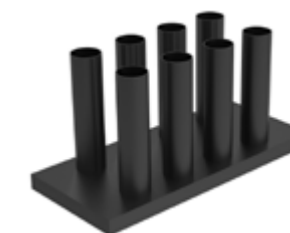
Art.nr – RE1025

Height: 1m



### REAXING LATERAL RACK FOR PREMIUM STATION

Art.nr – RE1066



### REAXING SATELLITE HOUSING SUCTION CUP – 3 PACK

Art.nr – RE1034



### REAXING SATELLITE HOUSING STRAP – 3 PACK

Art.nr – RE1035



### REAXING SATELLITE HOUSING COLLAR – 3 PACK

Art.nr – RE1036



### REAXING JUNCTION POLE

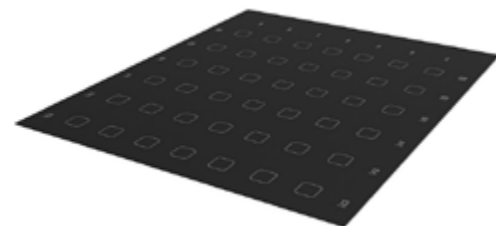
Art.nr – RE1037



## REAXING / REAX LIGHTS ACCESSORIES

### REAXING FLOOR FOR STATION

Art.nr – RE1038



### REAXING WIRELESS WIFI ROUTER

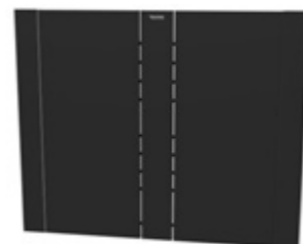
Art.nr – RE1029

Travel bag included.



### REAXING KIT FOR UPGRADING PREMIUM STATION TO 360PACK

Art.nr – RE1172



## REAXING / REAX LIFT

### REAXING REAX RACK - PRO 1

Art.nr – RE1041

REAX RACK PRO 1 features 7 height levels, a pull-up bar and 2 spots to store your weights and bars. This stylish rack is an essential staple.



Dimension : L157cm x W181cm x H249cm

### REAXING REAX BENCH

Art.nr – RE1042

REAX BENCH is a well-built adjustable bench. The 100% Italian design will surely turn heads.



Dimension : L153cm x W65cm x H150cm

### REAXING REAX LIFT DISCS

Art.nr – RE1049-RE1054

REAX LIFT is the first barbell in the world that **destabilizes the movement patterns** and increases the motor response. The disks contain liquid and are thus unstable. The user not only lifts the weight but needs to stabilize it too.

Weight: 5kg / 7.5kg / 10kg / 15kg / 20kg / 25kg



### REAXING REAX BUNGEE

Art.nr – RE1055-RE1057

REAX BUNGEE allows you to vertically attach Reax disks to a bar. The elastic band mechanism provides more instability in order to give you a more demanding workout. Compatible with standard weight disks.

Options: for 5kg, for 7.5kg, for 10kg



### REAXING REAX BAR 200

Art.nr – RE1058

REAX BAR 200 allows you to attach Reax bungees. The horizontal spring mechanism provides more instability in order to give you a more demanding workout.





## REAXING / REAX LIFT

### REAXING REAX DISK HOLDER

Art.nr – RE1070



### REAXING MOBILE PARALLELS

Art.nr – RE1005



### REAXING CUSHION

Art.nr – RE1068



### REAXING BAR COLLARS

Art.nr – RE1069



### REAXING VERTICAL STORAGE 1

Art.nr – RE1059



### REAXING VERTICAL STORAGE 2

Art.nr – RE1060



## REAXING / REAX FLUI

### REAXING REAX FLUI GREEN 16

Art.nr – RE1300-RE1304

Reax flui is more performing than any training ball, thanks to the movement of the liquid that transforms each exercise into a real neuromuscular training.

Weight: 0.5kg / 0.75kg / 1kg / 1.25kg / 1.5kg



### REAXING REAX FLUI BLUE 24

Art.nr – RE1305-RE1309

Reax flui is more performing than any training ball, thanks to the movement of the liquid that transforms each exercise into a real neuromuscular training.

Weight: 1kg / 2kg / 3kg / 4kg / 5kg



### REAXING REAX FLUI BRONZE 28

Art.nr – RE1310-RE1314

Reax flui is more performing than any training ball, thanks to the movement of the liquid that transforms each exercise into a real neuromuscular training.

Weight: 6kg / 7kg / 8kg / 9kg / 10kg

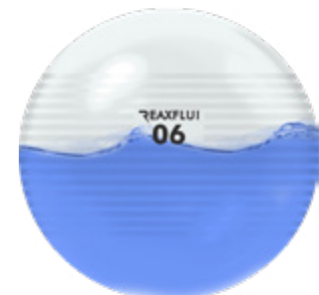


### REAXING REAX FLUI CLEAR 24

Art.nr – RE1363-RE1367

Reax flui is more performing than any training ball, thanks to the movement of the liquid that transforms each exercise into a real neuromuscular training.

Weight: 2kg / 3kg / 4kg / 5kg / 6kg



### REAXING REAX CAGE

Art.nr – RE1330-RE132

RAn accessory that allows you to hang or better hold your Flui Balls.

Options: 16 / 24 / 28 (model of flui ball)



## REAXING / REAX PUMP & ACCESSORIES

### REAXING REAX PUMP BALL

Art.nr – RE1330-RE132

The disks contain liquid and are thus unstable. The user not only lifts the weight but needs to stabilize it too. The disks are durable and silent when being dropped.

Weight:  
1.25kg / 2.5kg / 5kg



### REAXING REAX PUMP BAR

Art.nr – RE1333, RE1334

Weight:  
2.5kg / 5kg



### REAXING REAX KETTLE

Art.nr – RE1320-RE1329

This kettlebell contains liquid and is thus unstable. The user not only lifts the weight but needs to stabilize it too. These kettlebells are durable and shock-absorbing.

Weight:  
2kg / 4kg / 6kg / 8kg / 10kg / 12kg / 14kg / 16kg / 20kg / 24kg



### REAXING ELASTIC HANDLE

Art.nr – RE1318

For Flui balls.



### REAXING HAND PUMP

Art.nr – RE1319

For Flui balls.



## REAXING / VERTICAL STORAGE

### REAXING VERTICAL STORAGE 3

Art.nr – RE1357



### REAXING VERTICAL STORAGE 4

Art.nr – RE1358



### REAXING VERTICAL STORAGE 5

Art.nr – RE1359



### REAXING VERTICAL STORAGE 6

Art.nr – RE1360



### REAXING VERTICAL STORAGE 7

Art.nr – RE1361







# **YOU ARE ONE STEP AWAY FROM CREATING YOUR PERFECT SPACE**

- 1 CONTACT**
- 2 VISIT ON SITE AND PRODUCTS SELECTION**
- 3 2D / 3D PLAN SUBMISSION**
- 4 ORDER CONFIRMATION**
- 5 INSTALLATION SET UP**
- 6 ENJOY YOUR BRAND-NEW SPACE**

**AVERAGE  
REALIZATION TIME 6 MONTHS**

## **CONTACT US**

**CONTINUUM  
RUE DE LA PIERRE-À-MAZEL 39  
2000 NEUCHÂTEL  
SWITZERLAND  
+41 32 721 08 55  
INFO@CONTINUUM-SOLUTIONS.CH**





